

Wisteria



Robin Belisle | Limited Edition | Fall 2019

PRODUCTS NEEDED

- Benjamin Moore Regal Matte in BM1436 Whirlpool
- Golden Paintworks Slow Dry Fluid Acrylics in Phthalo Blue (Green Shade), Dioxazine Purple, Raw Umber, Raw Sienna, Titanium White, Carbon Black, and Van Dyke Brown Hue
- Golden Paintworks Pre-Mixed Metallic Paint in Silver
- Golden Paintworks Glazing Medium
- Golden Paintworks Metallic Texture Pearl Base
- Golden Paintworks Soapstone
- Gold Leaf

TOOLS NEEDED

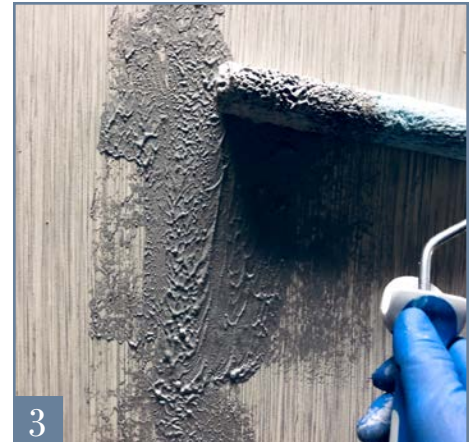
- Whizz rollers with a 1/2" nap
- Burlap tool (looks like artificial turf on a flat trowel)
- Measuring tape
- 1/8" Double Sided Sticky Tape



1



2



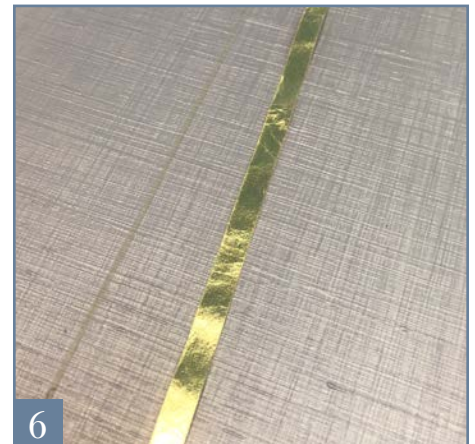
3



4



5



6

HOW TO:

NOTE: All mixed colors below will reference a Benjamin Moore paint color where needed to guide you while you are mixing your colors. They are for reference only unless it is a base coat.

- 1 | **BASECOAT** in Benjamin Moore 1436 Whirlpool and let dry.
- 2 | **MIX** a batch of Metallic Texture Pearl Base and Soapstone in a 1:1 ratio, approximately ½ cup each. Separate into two containers and set aside for the two separate color mixes below.
- 3 | **MIX** two color batches with the custom Metallic Texture Pearl Base and Soapstone mix:
 - **One** batch to match Benjamin Moore 1614 Delray Gray by using the custom Metallic Texture and Soapstone mix with Slow Dry Fluid Acrylics in Phthalo Blue (Green Shade), Van Dyke Brown Hue, Raw Sienna, a very small amount of Carbon Black, and Pre-Mixed Metallic Paint in Silver
 - Second batch to match Benjamin Moore 1453 Pebble Creek using the custom Metallic Texture and Soapstone mix with Dioxazine Purple, Raw Umber, and a small amount of Carbon Black, Titanium White, and Phthalo Blue (Green Shade)
- 4 | **USE** a whizz roller to roll on the Delray Gray mix in an even coat and prepare to use the Burlap Tool (*Photo 1*). When the product is on evenly and consistent, use the burlap tool to drag evenly vertically (*Photo 2*). If needed, repeat again (*Photo 3*). Let dry.
- 5 | **REPEAT** the above process with the Pebble Creek mix and this time drag it horizontally (*Photo 4*). Let dry.
- 6 | **PREPARE** the double sided tape and gold leaf (*Photo 5*). Mark off the area to be gold leafed and run the double sided sticky tape between markings. (Do not cross over lines before you add the gold leaf. Add the gold leaf on the first line, then run the opposite line (*Photo 6*).