

# Urban Luxe



**GPW GOLDEN**  
PAINTWORKS.

## Cindy Howard and Dana DeBuck | Limited Edition | Winter 2020

### PRODUCTS

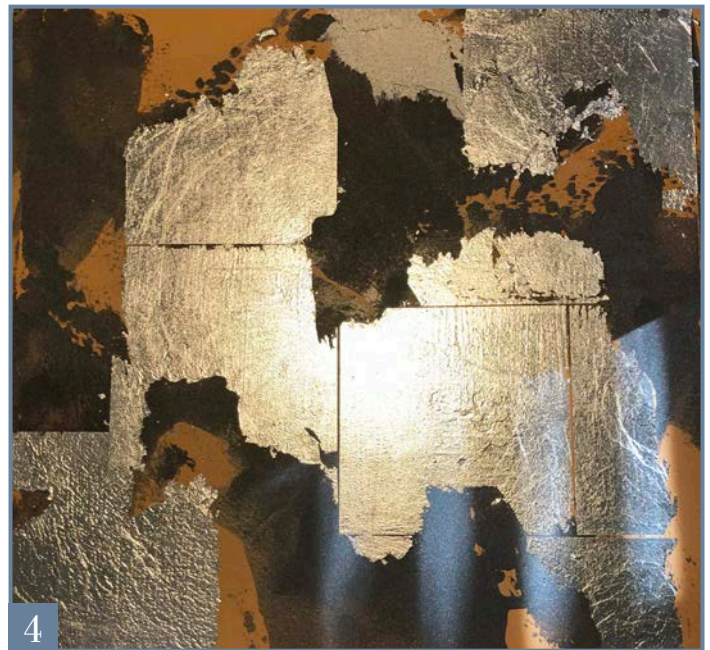
- Golden Paintworks Metallic Texture Tint Base Pearl
- Golden Paintworks Weathered Granite
- Golden Paintworks Sandstone
- Golden Paintworks Glazing Gel
- Golden Paintworks Glazing Medium

- Golden Paintworks Slow Dry Fluid Acrylics in Raw Umber
- Golden Paintworks Slow Dry Fluid Acrylics in Carbon Black
- Foil/Leaf Adhesive Size
- Aluminum Leaf Sheets
- Sherwin Williams SW6360 Folksy Gold / Satin Finish

### TOOLS

- Whizz Roller
- Plaster Trowel
- Chip Brushes
- Tape
- Stain Pad or Flat Sponge





**HOW TO:**

- 1 | BASECOAT** in Sherwin Williams Folksy Gold satin or color of choice. Let dry (*Photo 1*).
- 2 | MIX** Slow Dry Fluid Acrylics in Carbon Black into the Metallic Texture Tint Base Pearl to a dark charcoal or desired color. Trowel randomly over 70% of surface. Let dry (*Photo 2*).
- 3 | ROLL** Foil/Leaf Size adhesive randomly on surface and let set up (*Photo 3*). Lay down Foil/Leaf squares on sized areas. This sample has groupings of 2 - 4 squares. Let dry (*Photo 4*).

*Tip: You could also substitute Golden Paintworks Pre-Mixed Metallic Paint in Silver or Bright Silver randomly on surface.*

*continued on next page →*





**4 | MIX** Weathered Granite with a little Slow Dry Fluid Acrylics in Raw Umber to desired color. Trowel randomly, leaving some of previous steps still showing. Let dry (*Photo 5*).

**5 | MIX** 2 Sandstone mixtures:

- a) Sandstone with a little Slow Dry Fluid Acrylics in Raw Umber, and
- b) Sandstone with a little Slow Dry Fluid Acrylics in Carbon Black.

Pop on both colors with a trowel wet on wet over 25 - 30% with previous layers still showing in areas. Do not apply heavily (*Photo 6*). Lightly blend with a trowel and then a barely damp stain pad or flat sponge. If a lighter look is needed, you can skip trowel a bit of un-tinted Sandstone (*Photo 7*).



**6 | MIX** Glazing Gel with Slow Dry Fluid Acrylics in Raw Umber and Black to desired color. Tape off random lines across the surface and run product along tape line with a brush. You can use some of your leaf lines as guides (*Photo 8*). Remove the random tape lines and let dry.

**7 | MIX** Glazing Medium with Slow Dry Fluid Acrylics in Raw Umber to desired color. Add just a little to surface randomly and blend with a barely damp stain pad or flat sponge. Let dry. If desired, roll on Golden Paintworks Clear Topcoat Satin (*Photo 9*).