

METALLIC CHINOISERIE



GPW GOLDEN
PAINTWORKS.

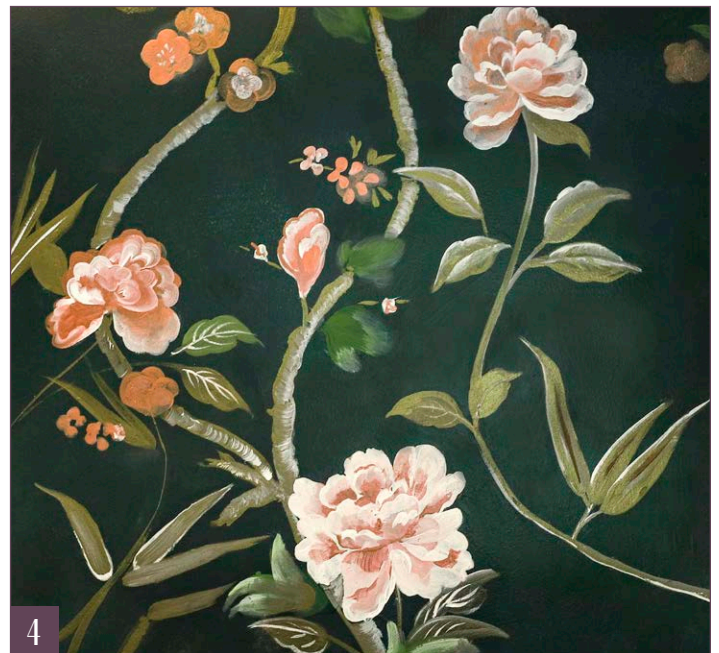
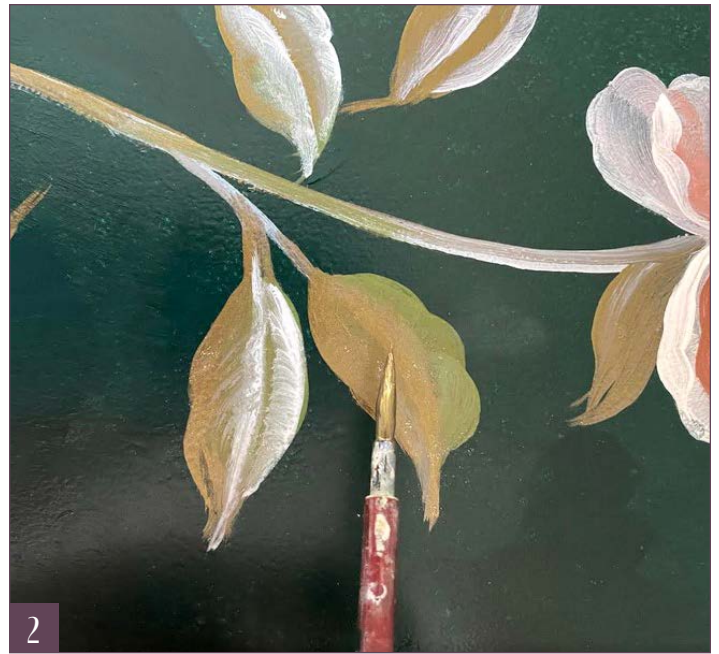
Cecelia Claire | Limited Edition Collection | Spring / Summer 2021

PRODUCTS

- Golden Paintworks Pre-Mixed Metallic Paint Vintage Copper
- Golden Paintworks Pre-Mixed Metallic Paint Green Dragon
- Golden Paintworks Pre-Mixed Metallic Paint Splendor
- Latex house paint and primer in one
- Golden Paintworks Slow Dry Fluid Acrylic Titanium White
- Golden Paintworks Slow Dry Fluid Acrylic Chromium Oxide Green

TOOLS

- Round acrylic fine art painting brush
- Thin watercolor liner brush with a fine point



HOW TO:

- 1 | **COAT** the surface in latex house paint with included primer. Once it has dried, paint leaf and stem shapes using the two green tones, and flowers in two red/pink tones and white (*Photo 1*).
- 2 | **USING** Slow Dry Fluid Acrylic Titanium White, create highlights on the leaves, darker petals and stems. The highlights will create a “glow” effect. You can also mix the Titanium White into the metallic paints and Slow Dry Fluid Acrylics to achieve mid-tones (*Photo 2*).
- 3 | **ON** the white flowers, add light pink tones using Golden Paintworks Pre-Mixed Metallic Paint Splendor with a filbert brush or round brush. Reinforce light areas of the petals with another layer of Slow Dry Fluid Acrylic Titanium White (*Photo 3*).
- 4 | **ADD** depth and contrast to the lighter pink tones using Pre-Mixed Metallic Paint Vintage Copper. Continue adding detail – light lines on dark areas, dark lines on light areas, until the desired effect is reached (*Photo 4*).