

METALLIC FAUX BOIS



Studio By Shauna, Inc. | Limited Edition Collection | Spring / Summer 2021

PRODUCTS

- Golden Paintworks Pre-Mixed Metallic Paint Roman Gold
- Golden Paintworks Pre-Mixed Metallic Paint Oiled Bronze
- Golden Paintworks Pre-Mixed Metallic Paint Moon Dust
- Golden Paintworks Slow Dry Fluid Acrylic
Van Dyke Brown Hue
- Golden Paintworks Glazing Medium
- Golden Paintworks Sheer Glazing Medium
- Golden Paintworks Clear Topcoat Satin (*optional*)

TOOLS

- Flogger
- Double thick chip brush
- Badger blender (*optional*)
- Mini roller
- Unbleached cheesecloth
- Towel
- Spray bottle with water and
10% Glazing Medium

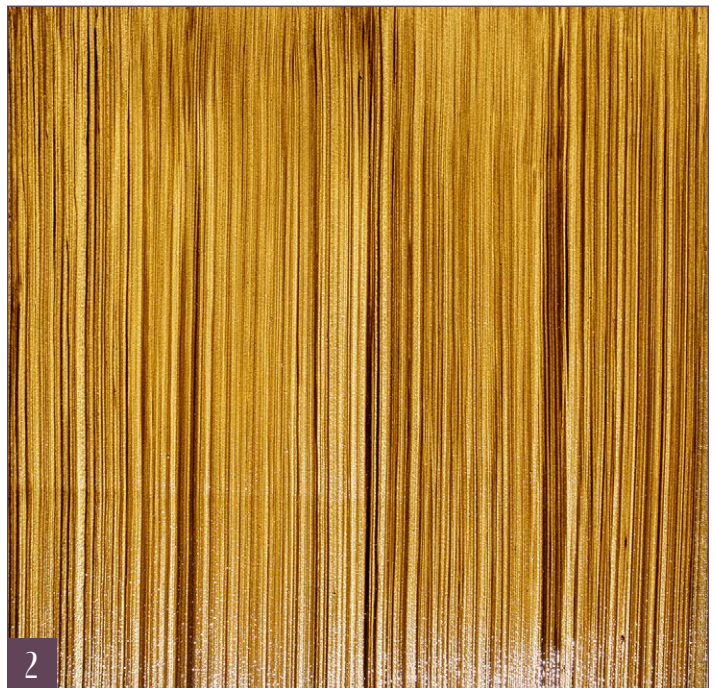
Modern take on a classic simple graining finish. The gold, bronze, and silver tones gives this finish design flexibility while the clean lines and metallic sheen add a contemporary flair. From mid-century modern to classical design that is transitioning into contemporary, this rich finish adds drama and sophistication to any space whether it's applied on a wall, furniture piece, or cabinetry.

Note: For a softer, more grayed-out version of this finish that leans into the look of metallic driftwood, see the optional variation listed at the end of the tutorial.

HOW TO:

- 1 | **BASE** coat surface with Pre-Mixed Metallic Paint Roman Gold.
- 2 | **MIX** Slow Dry Fluid Acrylic Van Dyke Brown Hue with Glazing Medium to create a rich brown glaze.
- 3 | **ROLL** a thin layer of Sheer Glazing Medium all over the surface to provide a slip coat for the glaze. Apply Van Dyke Brown Hue glaze mixture all over the surface with a mini roller, finishing off the roller in the direction the grain will go. Using a flogger, lay the brush flat against the surface and drag through the the glaze creating a stria effect (*Photo 1*). Vary the pressure to create different qualities of the stripes, some wider, some thinner, some with more glaze and some with less (*Photo 2*). Allow to dry.
- 4 | **MIX** the Pre-Mixed Metallic Paint Oiled Bronze with a combination of Glazing Medium and Sheer Glazing Medium to create a semi-opaque glaze, approximately a 25-30% ratio of paint to glaze.
- 5 | **SPRAY** surface with the water/glaze mixture and brush through with a large brush to even out. Apply Oiled Bronze glaze all over the surface with a mini roller, finishing off the roller in the direction the grain will go. Using a flogger, drag through the glaze quickly in the same direction as the existing stria, using light pressure to remove some of the glaze to create a slight stria effect (*Photo 3*). Offload the brush on a small terrycloth towel, then flog about 60% of the the glazed area by slapping the brush repeatedly and moving the brush in small increments up the grain. Soften glaze slightly with a badger blender or a double thick chip brush. Allow to dry.
- 6 | **CREATE** a glaze with Pre-Mixed Metallic Paint Moon Dust and Sheer Glazing Liquid, using about a 25-30% ratio of paint.

continued on next page →





7 | ROLL a thin layer of Sheer Glazing Medium all over the surface to provide a slip coat for the glaze. Roll a sheer veil of Moon Dust glaze all over the surface. Holding a cheesecloth in your hand like a pad, apply it to the surface with a bit of pressure from your fingers on the glazed surface. Pull through the glaze in the direction of the grain, allowing the pressure of your fingers to lift more glaze in those areas, creating an organic striped veil (*Photo 4*). Soften with a large chip brush. Flog the glaze here and there (*Photo 5*). Soften again if needed. Allow to dry.

8 | FOR furniture and cabinetry, protect the finish with a coat of Clear Topcoat Satin. Here is the finalized texture (*Photo 6*).

Note: For a slightly grayer and softer version of this finish, reverse the order of the first two paint colors, applying the Oiled Bronze first, and the Van Dyke Brown second. This will result in a cooler-toned finish, and a less brown finish, while allowing the Moon Dust veil to be more prominent in softening the overall appearance.

