

# MISTY LANDSCAPE



**GPW GOLDEN**  
PAINTWORKS.

**Cecelia Claire** | Limited Edition Collection | Spring / Summer 2021

#### PRODUCTS

- Latex interior wall paint in beige
- Golden Paintworks Mural Paint Titanium White
- Golden Paintworks Slow Dry Fluid Acrylic Raw Umber
- Golden Paintworks Glazing Medium
- Interior primer or gesso

#### TOOLS

- Large flat acrylic paintbrush
- Smaller round acrylic paintbrush
- Thin watercolor liner brush with a fine point

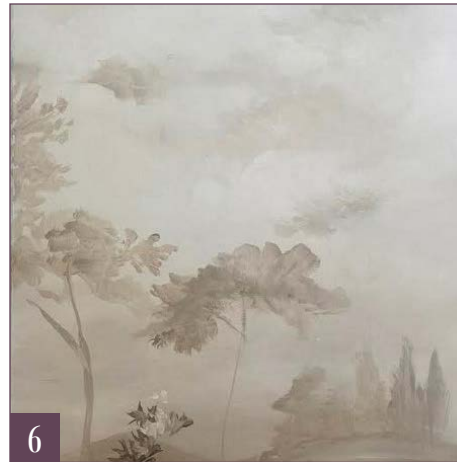


## HOW TO:

- 1 | SET** up a palette with the latex interior paint, a dot of Slow Dry Fluid Acrylic Raw Umber, and the Glazing Medium, as pictured (*Photo 1*).
- 2 | MIX** the Raw Umber into the interior paint and the Glazing Medium. Add Titanium White mural paint to the palette. Add Glazing Medium to the Titanium White (*Photo 2*).
- 3 | ON** a surface primed with interior primer or gesso, create a blended gradient using a large brush, with more white and cloud shapes at the top. Blend out the edges to create a soft effect (*Photo 3*).
- 4 | USING** a mid-tone blend of paints from your palette, create a foreground. Begin to create a treeline on the foreground (*Photo 4*).

*continued on next page* →





**5 | BLEND** thin coats of darker paint mix into the clouds for shadows, and thin coats of lighter paint mix as a “mist” on the treeline (*Photo 5*).

**6 | USING** mid-tones painted on with a round brush, continue to add detail. Extend the treeline, add middle ground trees, and foreground plants. Use more contrast as you get closer to the foreground (*Photo 6*).

**7 | CONTINUE** adding detail by creating shadows from a darker paint blend, and using thin coats of a lighter paint blend with plenty of Glazing Medium to create a misty glaze (*Photo 7*).

**8 | ADD** high-contrast foreground detail using Slow Dry Fluid Acrylic Raw Umber and Titanium White – no blending necessary (*Photo 8*).

